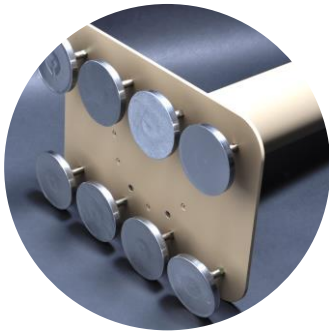




sales@ara-inc.com



VEHICULAR SPECTRUM OPERATIONS ANTENNA SERIES



The **Vehicular Spectrum Operations Series** of antennas are broadband monopoles designed to operate over a wide frequency range to support passive and active applications with low VSWR. These antennas exhibit exceptional gain in an omni-directional pattern. It is designed with compliance to the strictest military specifications, to include MIL-STD-801F environmental procedures.

This series of antennas are mounted in a sealed dielectric radome to offer mechanical stability and isolation from environmental hazards and offer superior power. The antennas are available with a magnetic mount for rapid installation on various vehicles or with a spring base featuring the NATO bolt pattern.

ARA


8880 Gorman Road, Laurel, MD 20723
301-937-8888 | www.ara-inc.com



sales@ara-inc.com

Revised March 2021

FEATURES

- Wide Variety of Frequency Bands
- Single and Multi-Port
- Superior Power Handling
- Universal or NATO Mount
- Rugged Design
- Multiple Finishes Available
- Made in the USA 

	Frequency	Gain	VSWR	Power Handling	Ports	Height	Diameter	Weight
ARA-143	100 MHz to 500 MHz	-5 to -7 dBi	3.0:1	150 W CW	3	43 in	2.75 in	10 lbs
	400 MHz to 1000 MHz	-1 to 0 dBi	2.0:1	100 W CW				
	800 MHz to 3000 MHz	-2 dBi	2.5 to 3.0 :1	100 W CW				
ARA-256	20 MHz to 520 MHz	-25 dBi for 20 to 25 MHz -13 dBi for 25 to 50 MHz	4.5:1 for 20 to 25 MHz 3.5:1 for 25 to 512 MHz 2.5:1 for 500 to 1000 MHz 3.0:1 for 1 to 1.5 GHz 2.5:1 for 1.5 to 6 GHz	150 W CW;300W Peak	3	67 in	4 in	18 lbs
	500 MHz to 1000 MHz	-9.5 dBi for 50 to 120 MHz -4 dBi for 120 to 180 MHz -5 dBi for 180 to 430 MHz		150 W CW				
	1000 MHz to 6000 MHz	-4 dBi for 430 to 480 MHz -10 dBi for 480 to 512 MHz 0 dBi for 500 to 1000 MHz -2 dBi for 1 to 6 GHz		1-3 GHz: 100 W CW 3-6 GHz: 50 W CW				
ARA-276	20 MHz to 700 MHz	-2 dBi Nominal	< 500 MHz 3.0:1 > 500 MHz 2.0:1	< 700 MHz 100 W CW > 700 MHz 50 W CW	3	72 in	4 in	22 lbs
	700 MHz to 2500 MHz	2 dBi Nominal						
	2500 MHz to 6000 MHz	1 dBi Nominal						
ARA-1186	100 MHz to 560 MHz	-2 to -6 dBi	2.5 to 3.0:1	150 W CW	4	47 in	2.75 in	15 lbs
	400 MHz to 1000 MHz	-1 dBi	2.5:1	100 W CW				
	800 MHz to 3000 MHz	-2 dBi		50 W CW				
	2000 MHz to 6000 MHz	0 dBi		100 W CW				
ARA-2060	200 MHz to 512 MHz	1 dBi Nominal	2.5:1 Nominal	100 W CW	3	63 in	4 in	18 lbs
	500 MHz to 6000 MHz	-2 dBi Nominal	2.0:1 Nominal	50 W CW				
	500 MHz to 6000 MHz							
ARA-5800	20 MHz to 250 MHz	-12 to 0 dBi	< 3.0:1 on 95% of Band	150 W CW	3	52 in	4 in	15 lbs
	250 MHz to 1000 MHz	-4 to +2 dBi	< 2.5:1 on 80% of Band					
	1000 MHz to 3000 MHz	-2 to 2 dBi	< 2.0:1 on 80% of Band					
ARA-6060	600 MHz to 2700 MHz	0 dBi	< 2.5:1	100 W CW	2	12 in	3 in	6 lbs
	2400 MHz to 6000 MHz							
ARA-8060	800 MHz to 2600 MHz	8 to 14 dBi	3.0:1 Max	200 W CW, 400 W Peak	2	52.5" H x 17" W	N/A	18 lbs
	2400 MHz to 6000 MHz	0 dBi Nominal	2.5:1 Max	100 W CW				
SAS-326-10	30 to 2000 MHz	-22 to +1 dBi	2.0:1 Typical	1W to 10W	1	30.6 in	5.5 in	11 lbs
	2 GHz to 26 GHz	-1 to +3 dBi						
SAS-500	20 to 800 MHz	50 to 500 MHz: -2 dBi Nominal	3.0:1 Nominal	100 W CW; 250 W Peak	1	39 in	4 in	16 lbs
SAS-5006	20 to 800 MHz	50 to 500 MHz: -2 dBi Nominal	3.0:1 Nominal	100 W CW	2	58 in	4in	16 lbs
	2.5 to 6 GHz	1 dBi Nominal	2.0:1 Nominal	50 W CW				
SAS-524	20 to 800 MHz	50 to 500 MHz: -2 dBi Nominal	3.0:1 Nominal	100 W CW	2	62 in	4in	18 lbs
	800 to 2500 MHz	2 dBi Nominal	2.0:1 Nominal	50 W CW				

* This is not a comprehensive list. Please contact Sales to learn about our additional products available to meet your needs.

The data described herein is subject to licensing under the International Traffic Arms Regulations (ITAR) 22 CFR Parts 120-130. This data sheet has been released into the public domain in accordance with these regulations.

ARA

8880 Gorman Road, Laurel, MD 20723
301-937-8888 | www.ara-inc.com