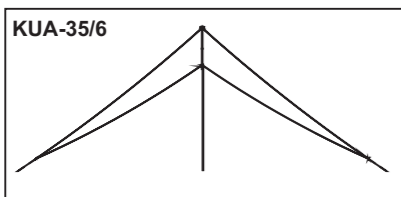
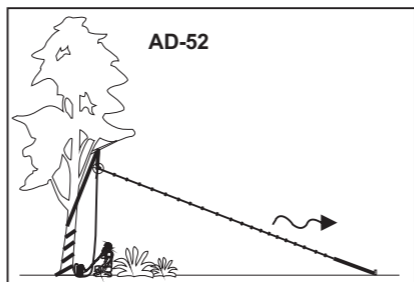
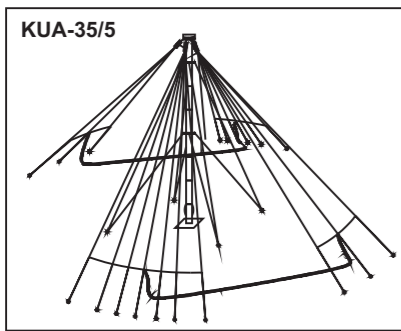
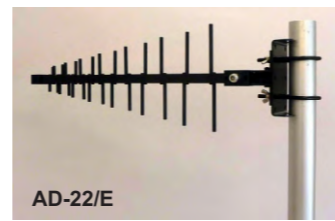
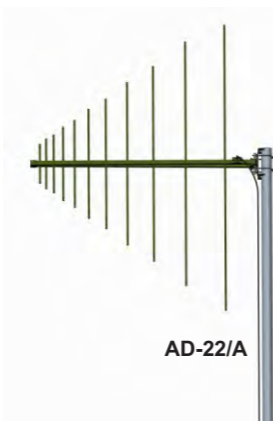
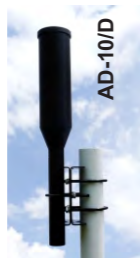
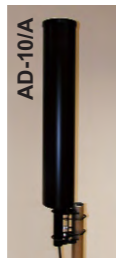


tactical - field transportable antennas



	KUA-35/5	KUA-35/6	AD-19/C-3512	AD-39/3512	AD-17	AD-17/B-110	AD-52	AD-17/C-1512-F	AD-22/B-F
Freq. (MHz)	2 - 30	2 - 30	30 - 512	20 - 512	30 - 90	30 - 108	30 - 90	100 - 512	225 - 512
Imped. (ohm)	50	50	50	50	50	50	50	50	50
VSWR	<2.5	<3	<2.5	<3.5	<3	<3	<1.8	<2.5	<1.5
Polarization	Hor./Ver.	Hor./Ver.	Hor./Ver.	Hor./Ver.	Vertical	Vertical	Vertical	Vertical	Hor./Ver.
RF Power (W)	1000	30 - 1000	1000	100	100	100	50	500	500
Gain (dBi)	+		5 - 6	-18 - 1	2	2	8 - 11.5	2	7
Construction	Wire Fan Dipole	Wire R-Load Dipole	Log-Periodic Wire Dipole	Dipole	Disc-cone	Disc-cone	Loaded Long-Wire	Disc-cone Flex. elem.	Log-Periodic Flex. dipoles
Dim. (HxWxL;m)	10x25x25	10x40x2	6.5 x 6.1	3	3x2.2x2.2	3.2x2.2x2.2	9x17x1	0.9 x 1x1	1 x 0.75
Weight (kg)	67	6	14	4.2	6.1	7.3	4.1	3.5	3.1

base station antennas



	AD-2/...	AD-10/S	AD-10/A	AD-10/D	AD-22/A	AD-22/B	AD-22/C	AD-22/E	AD-22/F
Freq. (MHz)	2 - 30	108 - 512	225 - 2000	500 - 3000	100 - 512	225 - 512	80 - 1300	700 - 2800	1000 - 6000
Imped. (ohm)	50	50	50	50	50	50	50	50	50
VSWR	-	<3	<2	<2.5	<2	<1.5	<2.5	<2.5	<2.5
Polarization	Ver.	Ver.	Ver.	Ver.	Hor./Ver.	Hor./Ver.	Hor./Ver.	Hor./Ver.	Hor./Ver.
RF Power (W)	1000	500	500	500	500	500	100	150	1000
Gain (dBi)	-	typ. 0	typ. 0	1 - 2.5	6 - 7	7	6	8	9 - 11
Construction	Whip Monopole	Dipole	Dipole	Dipole	Log-periodic dipole	Log-periodic dipole	Log-periodic dipole	Log-periodic dipole	Log-periodic dipole
Dim. (Hxdiam;m)	max 9x0.05	1x0.13	0.53x0.13	0.5 x 0.9	1.6x1.2	1x0.75	1.8x2	0.73x0.225	1 x 0.16
Weight (kg)	max 10	7.8	5.5	3	4	2.2	18	1.75	5



**TRIVAL
antenne**



PPM Systems
+44 (0) 1793 784389
sales@ppmsystems.com
www.ppmsystems.com

ANTENNAS HF-VHF / handheld / vehicular / base
UHF / manpack / field/tactical / station

handheld - manpack - portable antennas



	A-7142	AD-25/C-...	AD-25/CW-...	AD-26/C-...	AD-26/CW-...	AD-44/BW-...	AD-44/CW-...	AD-25/CW-2175	AD-44CW-3175	AD-25/WB-3512	AD-25/CW-3512	AD-44/...-30-512	AD-44/WB-3512	AD-65/...-1512	AD-44/E-CM	AD-44/E-HH	AD-64/A	AD-64/B	AD-64/C	AD-64/D
Freq. (Mhz)	2 - 30	30 - 108	30 - 108	30 - 108	30 - 108	30 - 108	30 - 108	20 - 175	30 - 175	30 - 512	30 - 512	30 - 512	30 - 512	108 - 512	225 - 512	225 - 512	225 - 2500	225 - 1000	1000 - 2500	500 - 3000
Imped. (ohm)	50	50	50	50	50	50	50	50	50	50	50	50	50	50	50	50	50	50	50	50
VSWR	N/A	N/A	< 3.5	N/A	< 3.5	< 3.5	< 3.5	< 3.5	< 3.5	< 4	< 3.5	< 3.5	< 3.5	< 3	< 3	< 2.5	< 3	< 3	< 3	< 3
Polarization	Vertical	Vertical	Vertical	Vertical	Vertical	Vertical	Vertical	Vertical	Vertical	Vertical	Vertical	Vertical	Vertical	Vertical	Vertical	Vertical	Vertical	Vertical	Vertical	Vertical
RF Power (W)	50	50	15 - 25	50	15 - 25	8	10 - 25	16	15	20	20 - 50	5	20	15	20	15	50	20	20	50
Connector	Various	Thread	Various	Thread	Various	TNC male	TNC male	N male	BNC mod.	TNC male	Various	TNC male	TNC male	TNC/N male	N male	TNC male	N male	N male	N male	N male
Construction	Fold. whip	Tape	Tape	Fold. whip	Tape	Helix/Whip	Tape	Tape	Tape	Tape/Dipole	Tape	Whip/Tape	Tape/Dipole	Whip	Tape/Dipole	Whip	Dipole	Dipole	Dipole	Dipole
Gooseneck (mm)	185	165 - 250	165 - 250	185	165 - 250	-	- / 165	-	165	-	165 - 250	-	-	-165	200	-	165	165	165	165
Dimensions (mm)	max. 3000	200-1550	1200 - 1650	max. 3000	1200 - 1650	150 - 450	835 - 1200	1020	1180	1300	1155-1455	380 - 825	590	500/670	320	260	625	625	485	425
Weight (gr.)	350	160-250	160-250	350	160-250	100 - 170	100 - 170	240	300	500	320-750	100 - 155	280/155 LW	250	580	90	460	460	350	400

mobile - vehicular antennas



	AD-4	AD-18/CF-...	AD-18/D	AD-18/D-110	AD-18/D-2110	AD-21/3108	AD-27/V120-3108	AD-27/V190-3108	AD-21/6688	AD-21/1318	AD-18/D-3512	AD-21/3512	AD-27/DB-3512	AD-27/V150-3512	AD-18/F-HP	AD-18/H-1318	AD-18/E-HP	AD-18/G-2210	AD-18/G-50300	AD-18/G-50600
Freq. (MHz)	2 - 30	30 - 88 (108)	30 - 90	30 - 108	20 - 108	30 - 108	30 - 108	30 - 108	66 - 88	130 - 180	25 - 512	30 - 512	20-108/225-512	30 - 512	108 - 512	130 - 180	225 - 512	225 - 1000	500 - 3000	500 - 6000
Imped. (ohm)	50	50	50	50	50	50	50	50	50	50	50	50	50	50	50	50	50	50	50	50
VSWR	N/A	< 3.5	< 3.5	< 3.5	< 3.5	< 3.5	< 3.5	< 3.5	< 2.5	< 2	< 3.5	< 3.5	< 2.5	< 3.5	< 3.5	< 3	< 3	< 3.5	< 3.5	< 3.0
Gain	N/A	-4 ... +1 dBi	-5 ... +0.5 dB _{i4}	-6 ... +0.5 dB _{i4}	-8 ... +2 dB _{i4}	typ 0 dB _{i4}	-8 ... 0 dB _{i4}	-7 ... 2 dB _{i4}	typ 0 dB _{i4}	typ 2 dB _{i4}	-6 ... +0.5 dB _{i4}	-12 ... 0 dB _{i4}	-8 ... +3 dB _{i4}	-8 ... +2 dB _{i4}	-4 ... +0 dBi	0 dBi	-1 ... +2 dBi	-10 ... +3 dBi	+1 ... +2.5 dBi	-2 ... +2 dBi
Polarization	Vertical	Vertical	Vertical	Vertical	Vertical	Vertical	Vertical	Vertical	Vertical	Vertical	Vertical	Vertical	Vertical	Vertical	Vertical	Vertical	Vertical	Vertical	Vertical	Vertical
RF Power (W)	400 - 1000	100	150	100	100	25	100	100	50	50	100	50	100	100	200	100	200	50	200-500	150-500
Connector	Thread M8	N, BNC	N, BNC	N, BNC	N, BNC	FME+adap.	N, BNC	N, BNC	FME+adap.	FME+adap.	N, BNC	FME+adap.	N, BNC	N, BNC	N, BNC	N, BNC	N, BNC	N, BNC	N	N
Construction	Sect. whip	Center-fed	End-fed	End-fed	End-fed	End-fed	End-fed	End-fed	End-fed	End-fed	End-fed	End-fed	End-fed/CF	End-fed	Center-fed	Center-fed	Center-fed	Center-fed	Center-fed	Center-fed
Height (m)	3.6 - 8.4	3.0	2.775	2.795	2.795	1.2	1.2	1.9	1.2	1.025	2.75	1.225	2.185	1.475	1.55	1.55	1.13	1.2	0.465	0.108
Weight (kg)	3.5 - 6	3.6	3.5	3.5	3.5	1.0	2.0	2.2	1.0	1.0	4.0	1.0	4.4	3.5	4	4	3.7	3.5	3.3	1.3