

# PRODUCT CATALOG

**JEM**

ENGINEERING



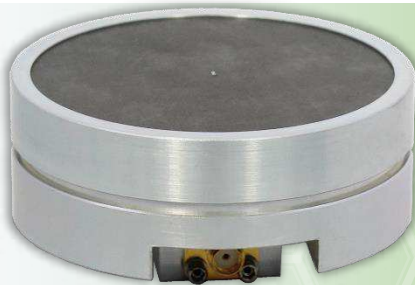


## BROADBAND CARD ANTENNAS

PAGE | 4

## FLAT PANEL ANTENNAS

PAGE | 5



## HYBRID SPIRAL ANTENNAS

PAGE | 6

## CUTTING-EDGE JEM ANTENNAS

PAGE | 7



## LOG PERIODIC ANTENNAS

PAGE | 8

## MULTI-BAND AIRBORNE ANTENNA ARRAYS

PAGE | 9

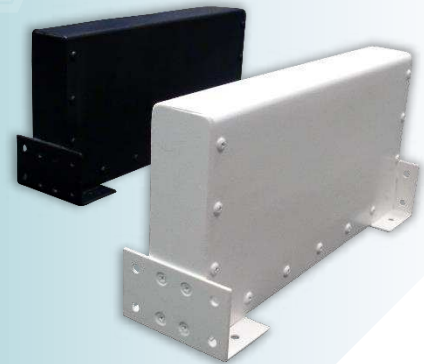


## AIRBORNE BLADE ANTENNAS

PAGE | 10

## WIDEBAND SECTOR ANTENNAS

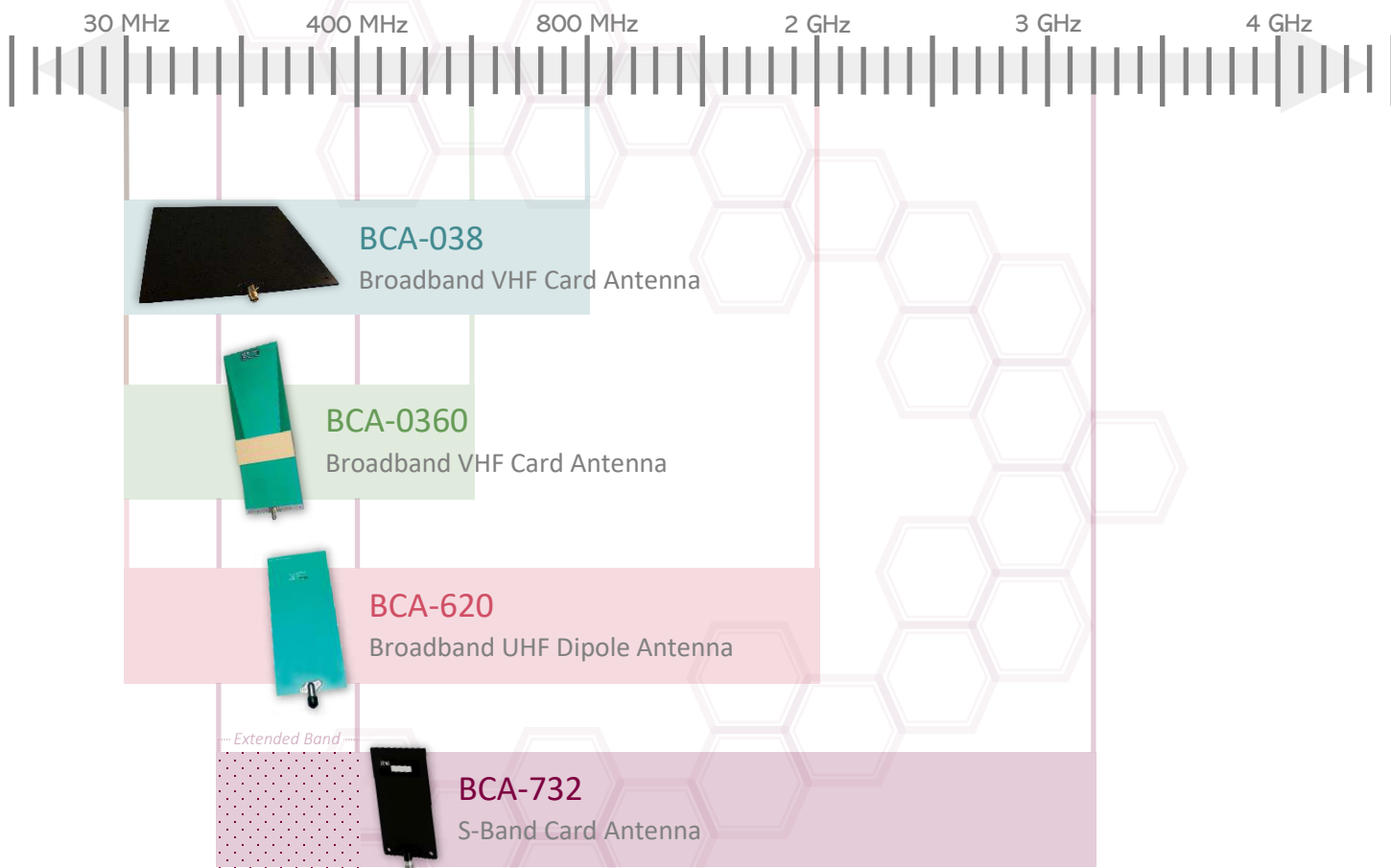
PAGE | 11



## UHF SATCOM ANTENNAS

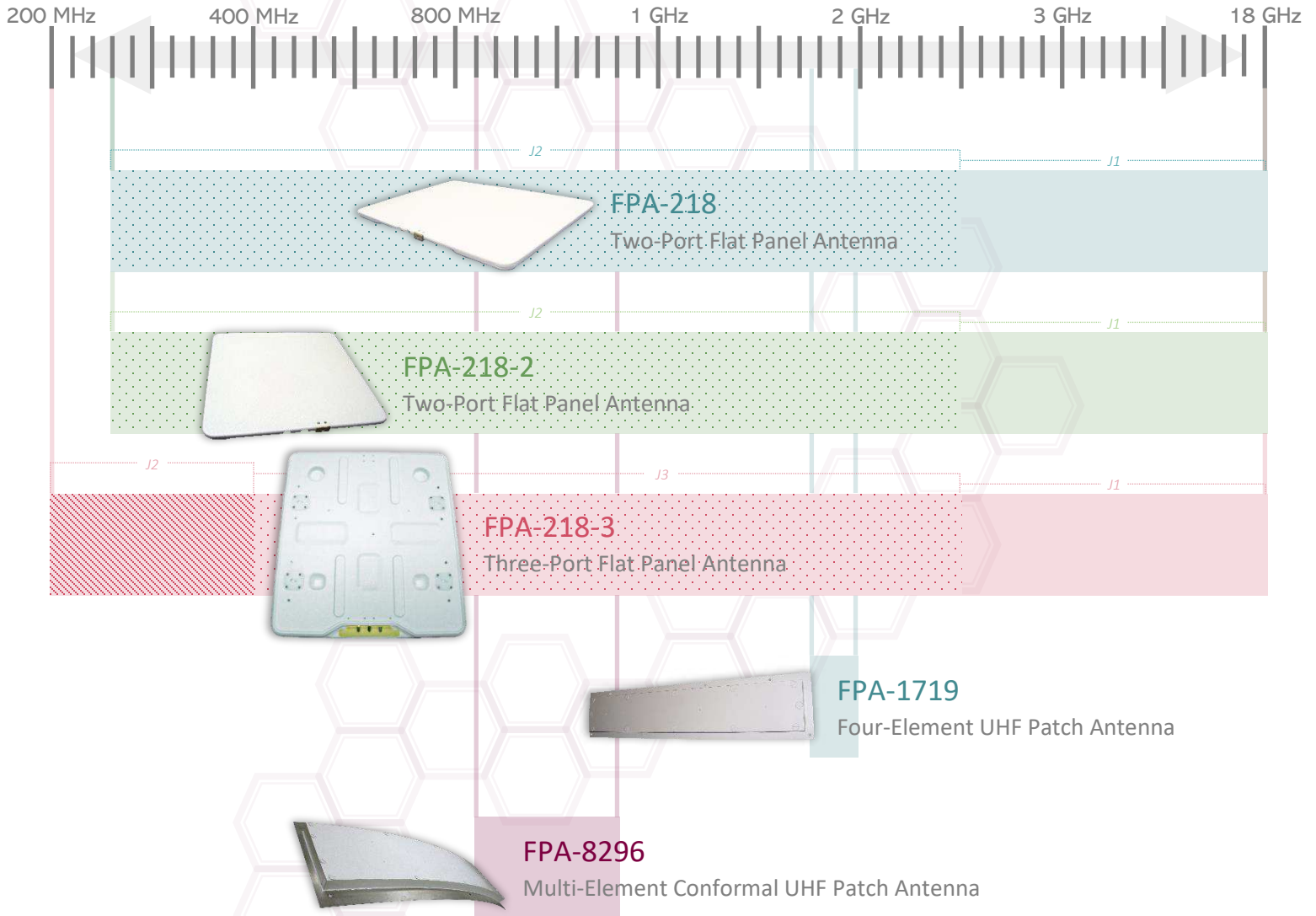
PAGE | 12

## Broadband Card Antennas



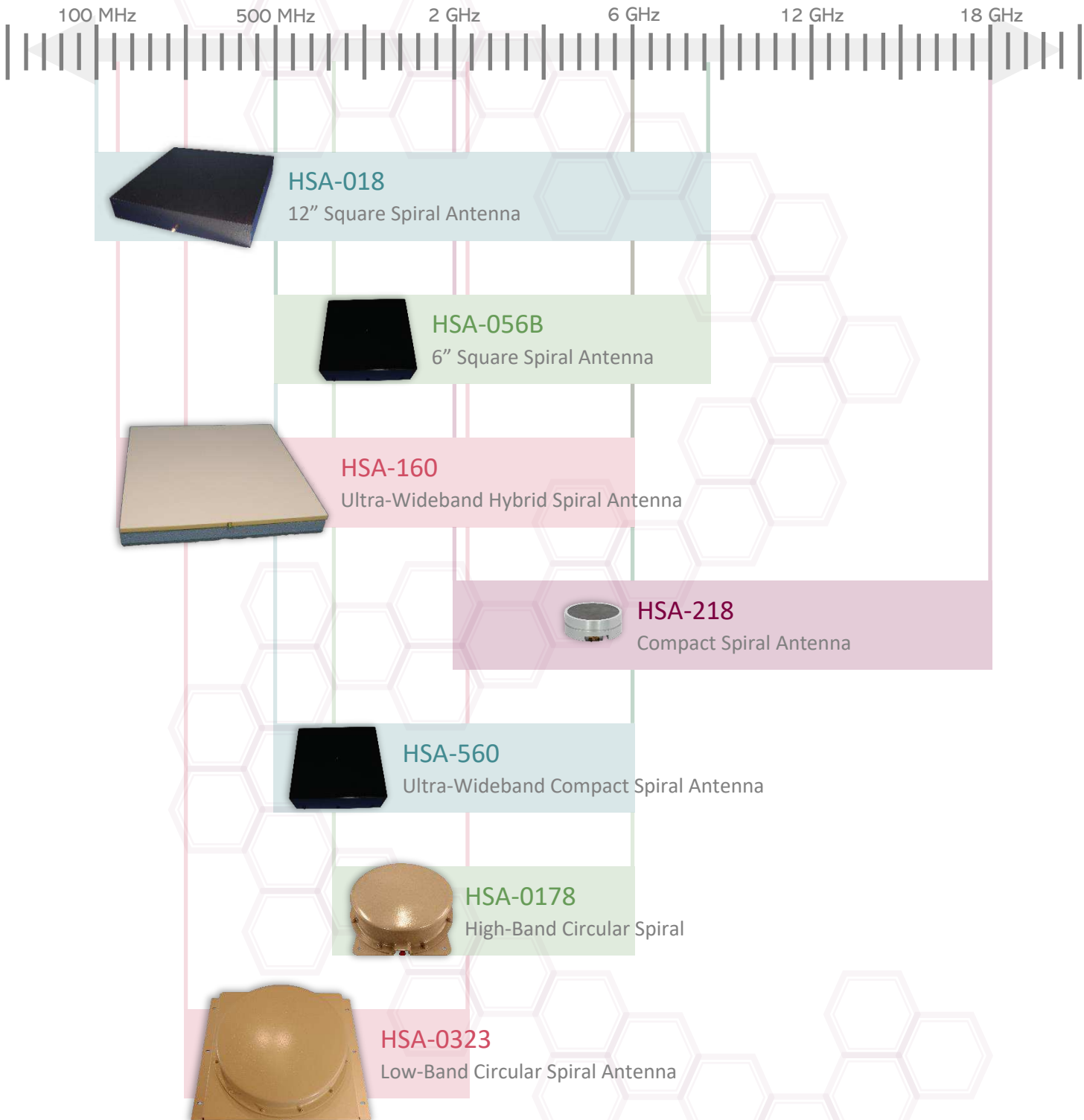
# FPA PRODUCTS

## Flat Panel Antennas

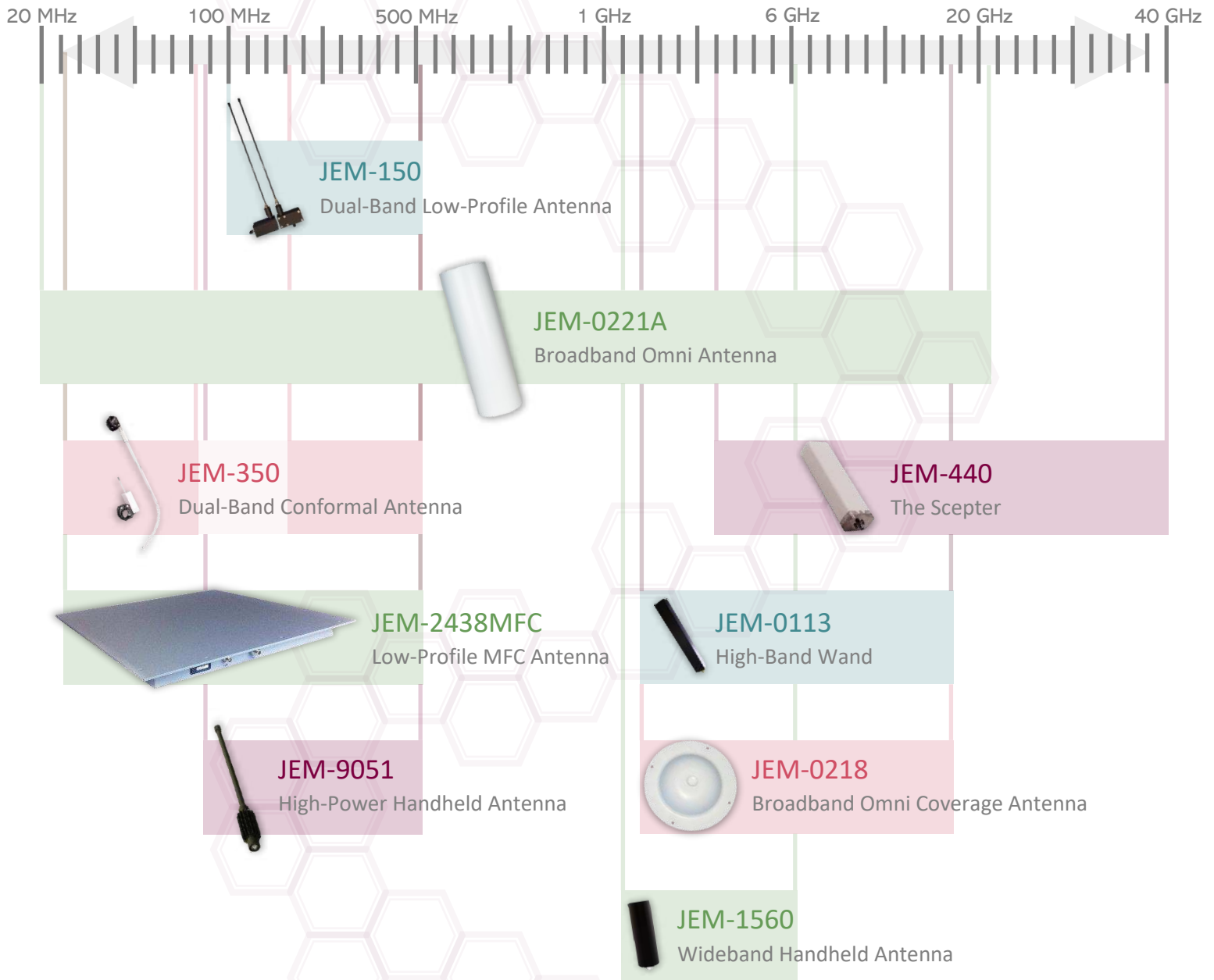


# HSA PRODUCTS

## Hybrid Spiral Antennas

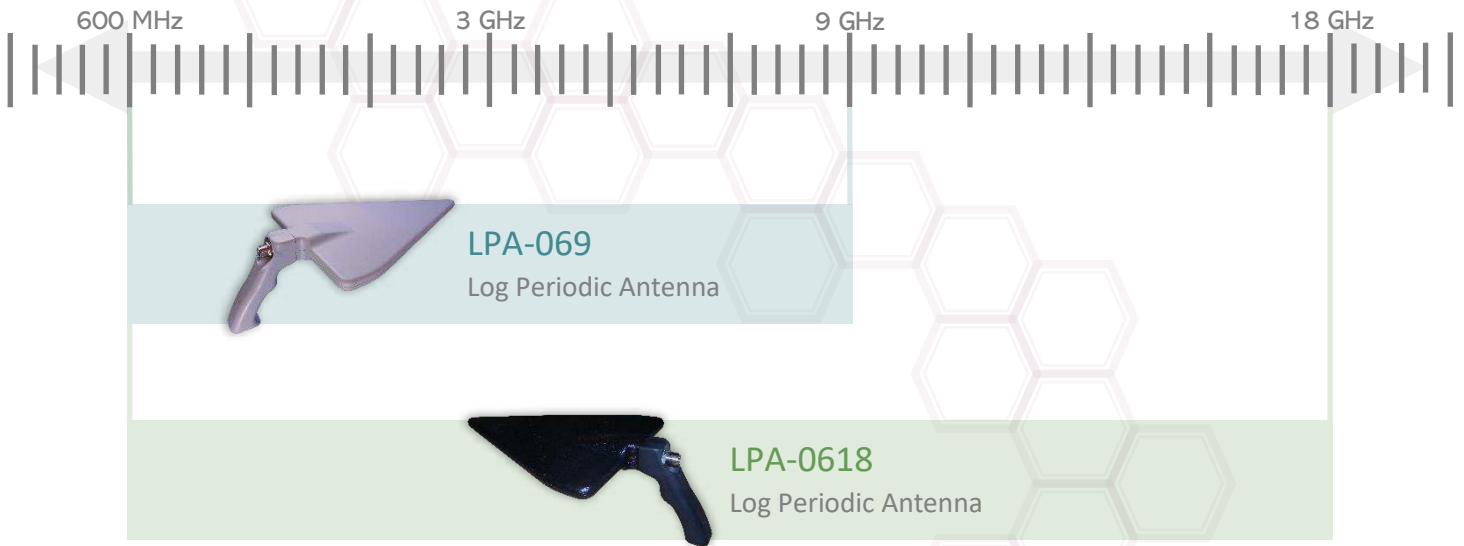


## Cutting-Edge JEM Antennas



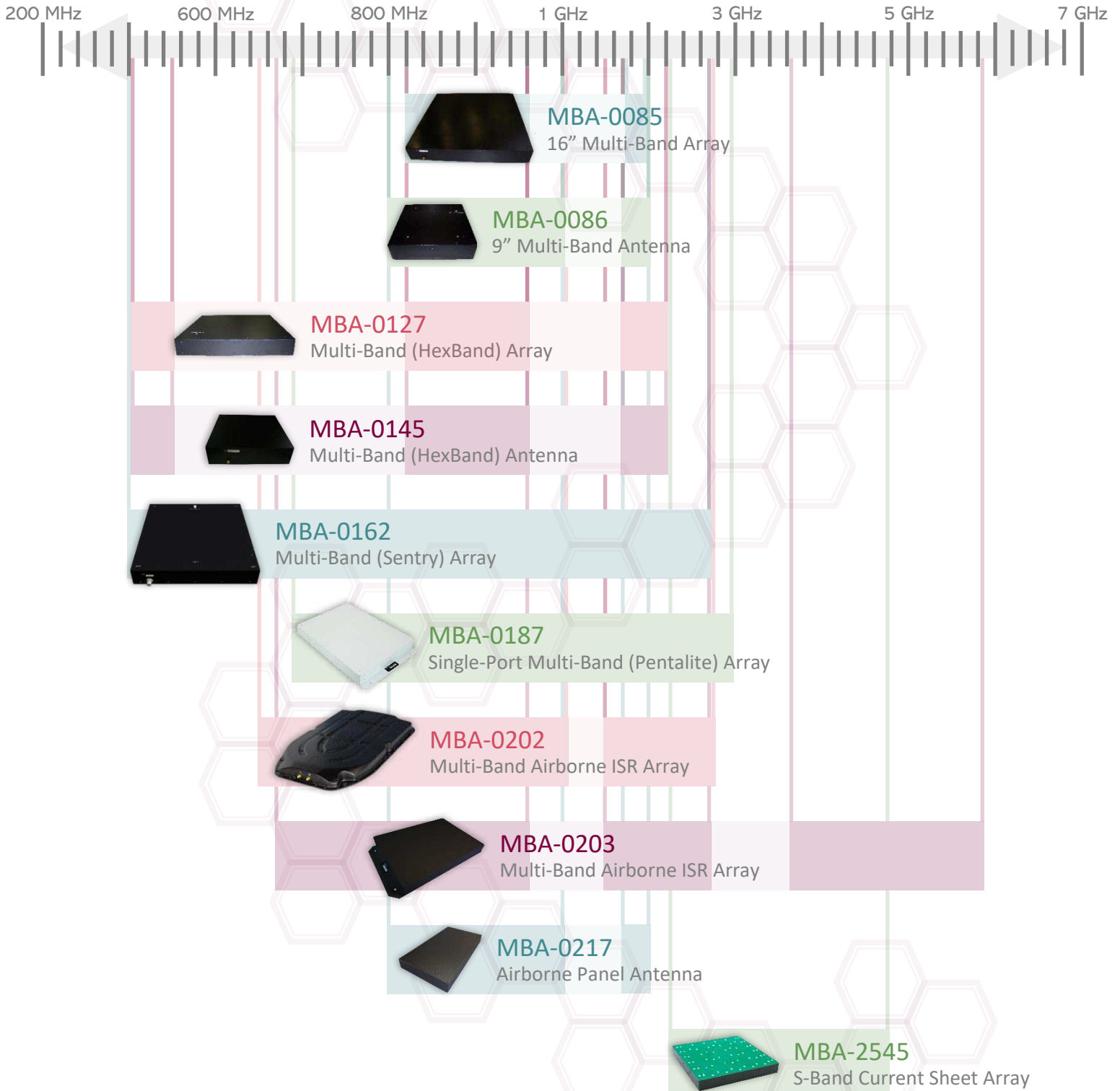
# LPA PRODUCTS

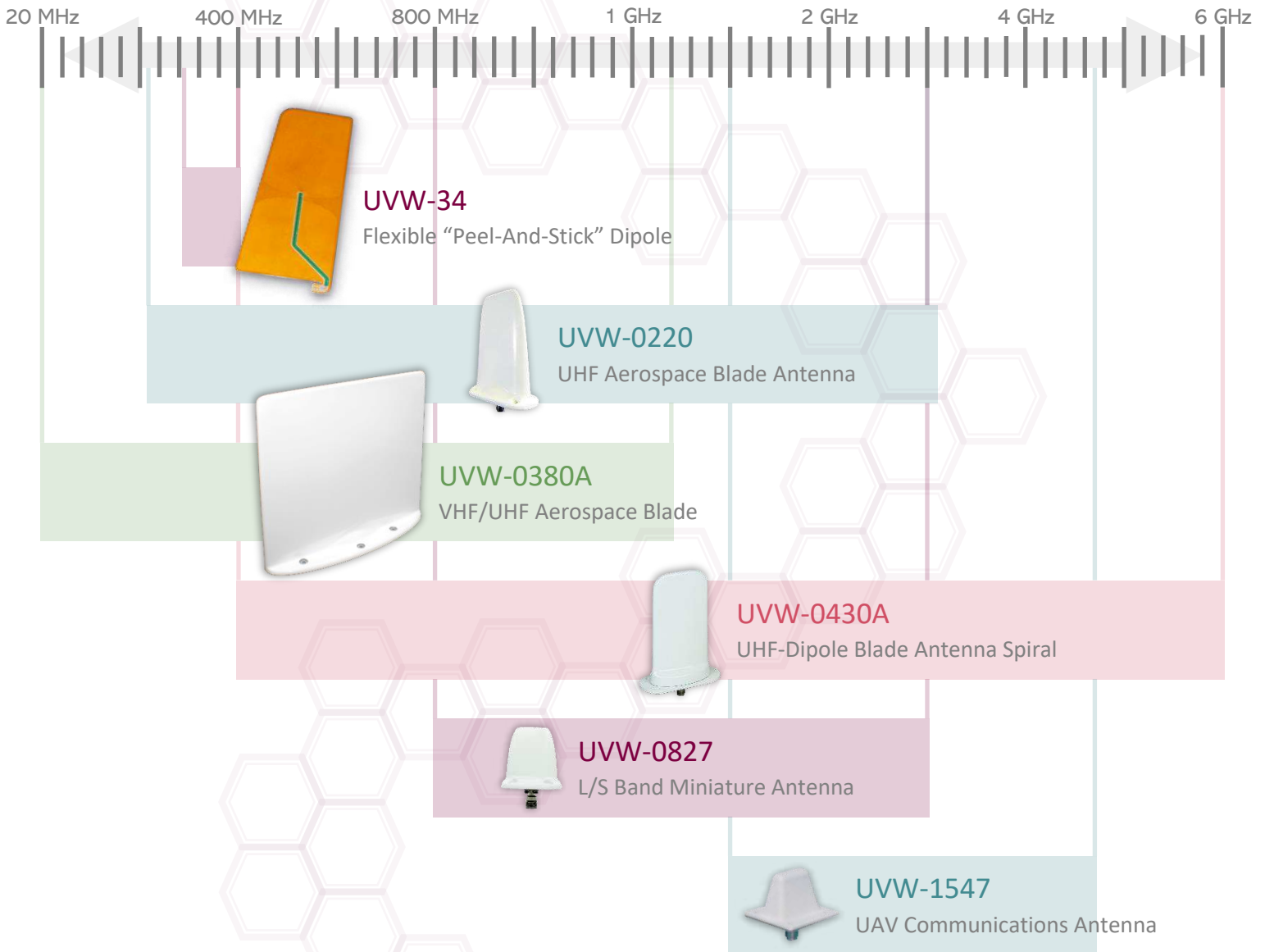
## Log Periodic Antennas



# MBA PRODUCTS

## Multi-Band Airborne Antenna Arrays





# WSA PRODUCTS

## Wideband Sector Antennas



**WSA-0520**  
Genetic Broadband Field Sensor



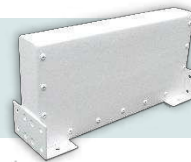
**WSA-1424**  
1.4-2.4 (9") L-S Sector Antenna



**WSA-1660-5**  
1.6-6 (5") L-C Sector Antenna



**WSA-1660-6**  
1.6-6 (6") L-C Sector Antenna



**WSA-1660-9**  
1.6-6 (9") L-C Sector Antenna

# UHF SATCOM PRODUCTS

## UHF SATCOM Antennas



240 MHz

380 MHz



**HSA-2438**

MUOS SATCOM Spiral Antenna



**HSA-2438A**

3.5" Low- Profile MUOS SATCOM Antenna



**HSA-2438C**

Airborne Conformal MUOS SATCOM Antenna



**HSA-2438LP**

2.5" Low-Profile MUOS SATCOM Antenna



**JEM-238MFC**

1.25" Ultra-Low-Profile MUOS UHF SATCOM Antenna

The background features a vertical gradient from dark purple on the left to white on the right. A pattern of overlapping, semi-transparent hexagons is overlaid on this gradient. The hexagons are arranged in a staggered grid, with some appearing as double-line outlines and others as single-line outlines.

[sales@jemengineering.com](mailto:sales@jemengineering.com)