

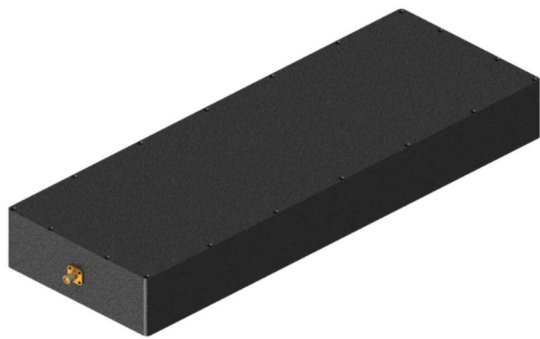


CORRY MICRONICS, INC PRODUCT SPECIFICATION

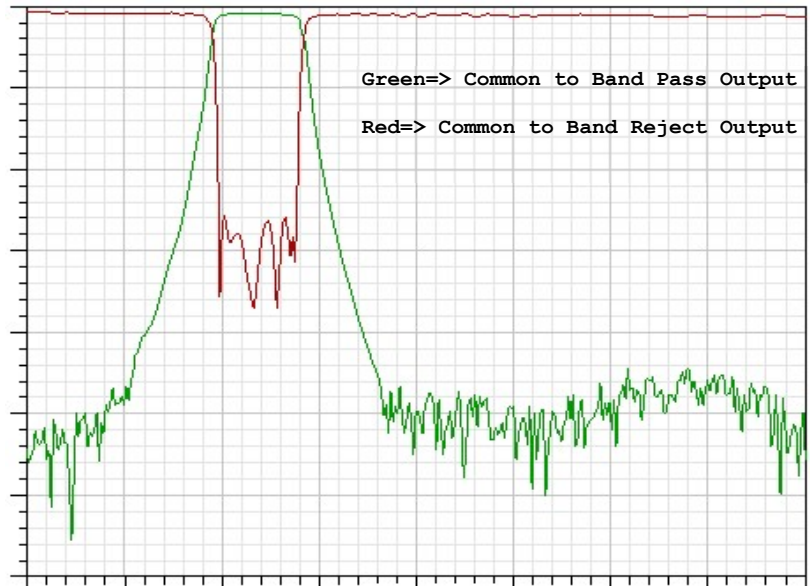
CMIBFNF-3.3-4.2G Hybrid Band Pass Band Reject Diplexer

Electrical Specifications

Parameter	Specification	
	Band Pass	Band Reject
Input Frequency Range	2 ~ 8 GHz	
Frequency Range	3300 ~ 4200MHz	3300 ~ 4200MHz
Insertion Loss	2.5 dB Max	2 dB @ 2000 ~ 3100 MHz 4 dB @ 4500 ~ 8000 MHz
Rejection	55 dB @ DC ~ 2700 MHz 55 dB @ 5100 ~ 8000 MHz	40 dB Min
VSWR @ Common Port	2.0:1 Max	
Power	1 Watt	
Connectors	SMA (F)	
Dimensions	See Attached Drawing (All Dimensions are in Inches)	



Transmission Frequency Response



CALL OUR SALES DEPARTMENT FOR MORE INFORMATION OR VARIATIONS OF THIS PRODUCT.

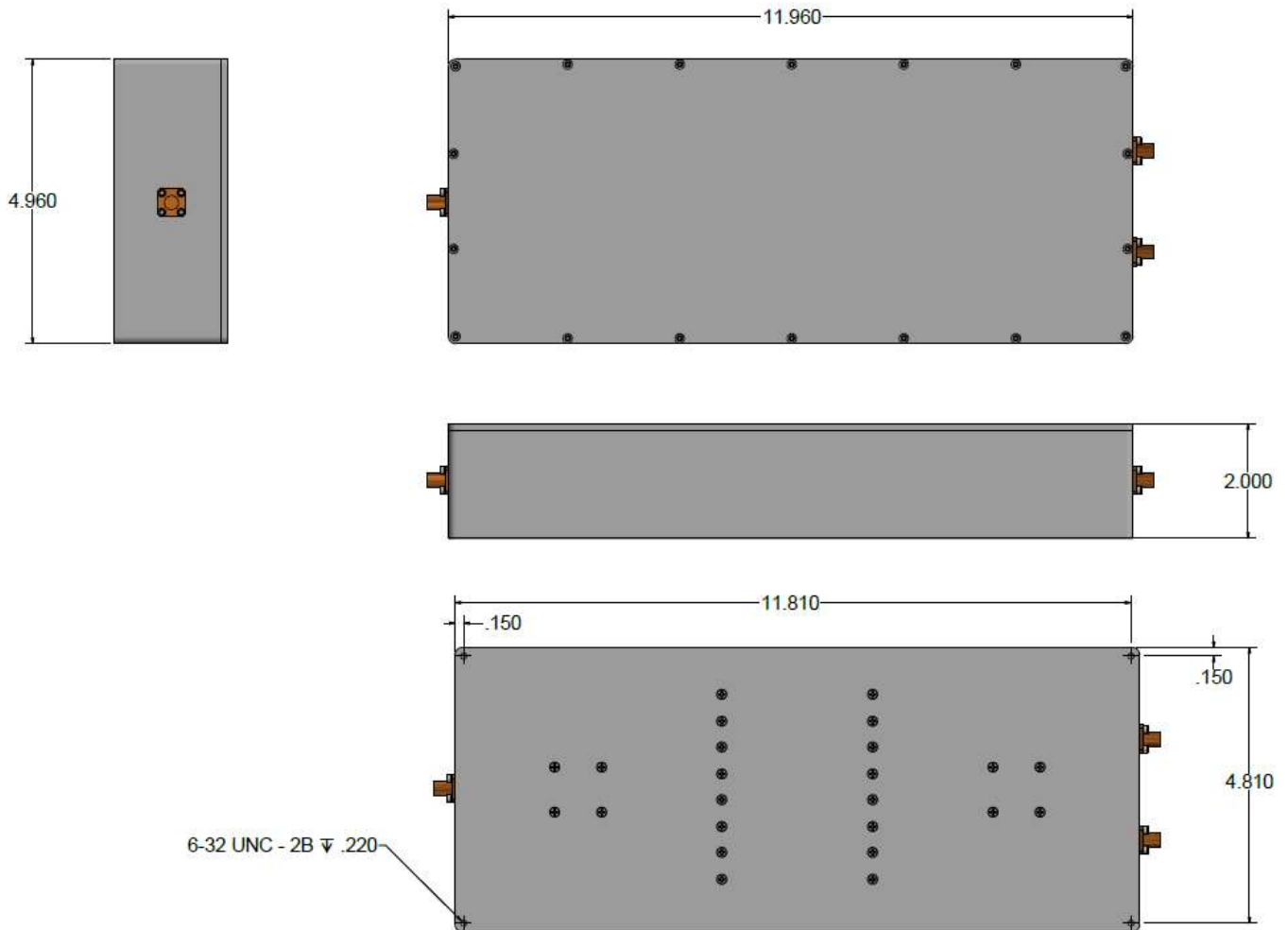
Corry Micronics, Inc. One Plastics Rd. - Corry, PA 16407
(724) 940-7556 ext. 138 Fax (724) 940-7707 www.cormic.com

Corry Micronics Inc. herein referred to CMI, believes this information to be accurate, but makes no warranties, expressed or implied as to the accuracy of this document. CMI assumes no liability for any injury, loss, damage, direct or consequential arising from the use of our products. User assumes all risk whatsoever in connection with its intended use. CMI also reserves the right to change this document without notice. 07/31/2020



CORRY MICRONICS, INC PRODUCT SPECIFICATION

Outline Drawing



CALL OUR SALES DEPARTMENT FOR MORE INFORMATION OR VARIATIONS OF THIS PRODUCT.

Corry Micronics, Inc. One Plastics Rd. - Corry, PA 16407

(724) 940-7556 ext. 138 Fax (724) 940-7707 www.cormic.com

Corry Micronics Inc. herein referred to CMI, believes this information to be accurate, but makes no warranties, expressed or implied as to the accuracy of this document. CMI assumes no liability for any injury, loss, damage, direct or consequential arising from the use of our products. User assumes all risk whatsoever in connection with its intended use. CMI also reserves the right to change this document without notice. 07/31/2020